

State of the State's Floodplains

MAFSM Conference

October 15, 2015

Dave Guignet – State NFIP Coordinator

All 24 Counties are now Digital - as Effective or Preliminary

MARYLAND DFIRM Outreach Flood Risk Application

MDE | MDE Firm Outreach | Help

How To | Details | FAQs | Contents

202 m

Find a place

Zoom to County
Phoenixville

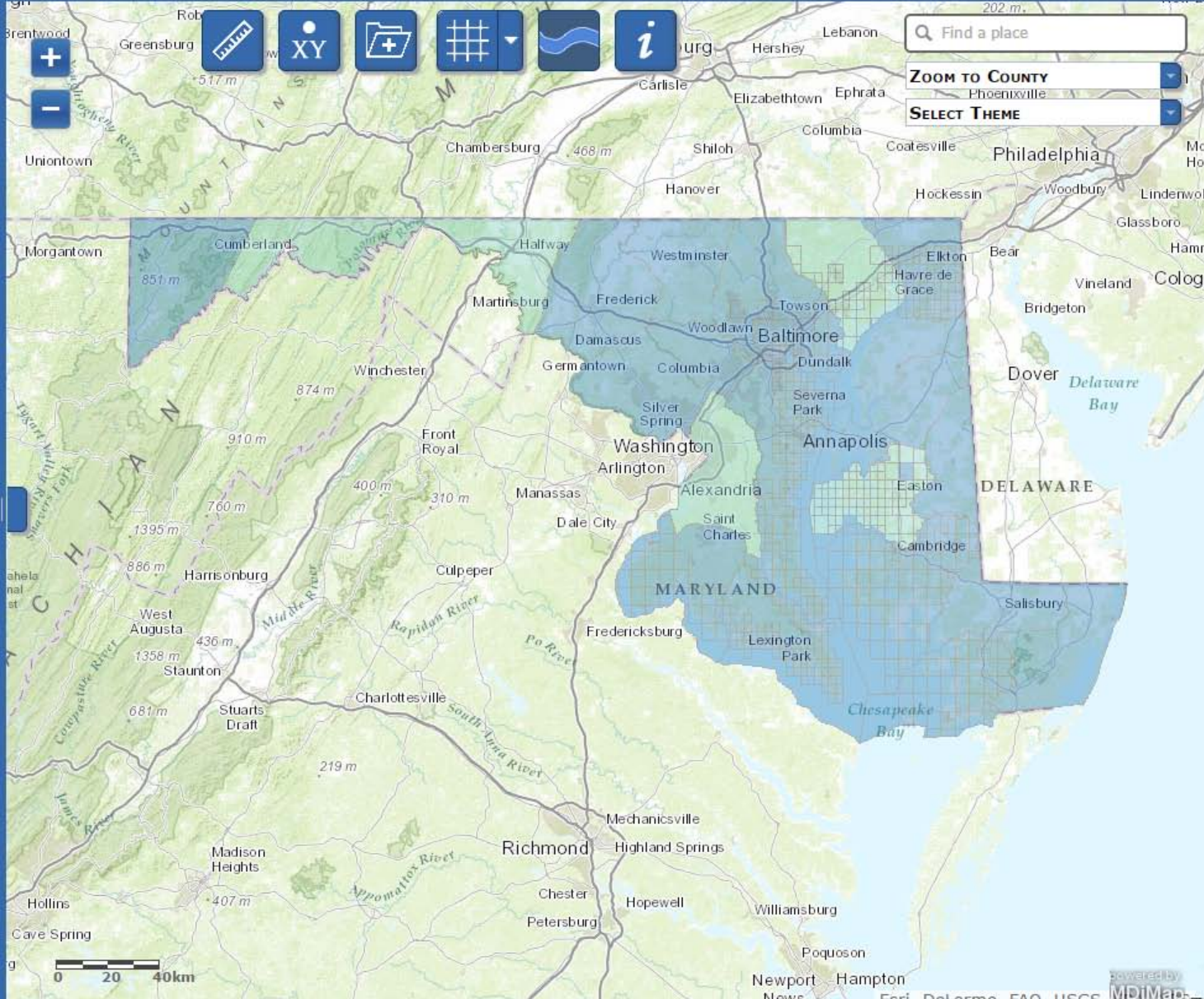
Select Theme

This tool is designed to aid you in researching your flood risk in the state of Maryland.

Content on this site is typically updated with in a 30 days of any maps or data released by FEMA, so please check back as the status of your county may have changed. It is important to investigate your flood risk status and contact your insurance agent to make the necessary modifications to your coverage. A schedule for tentative county effective dates can be found [here](#).

Email questions or comments to flood.maps@maryland.gov

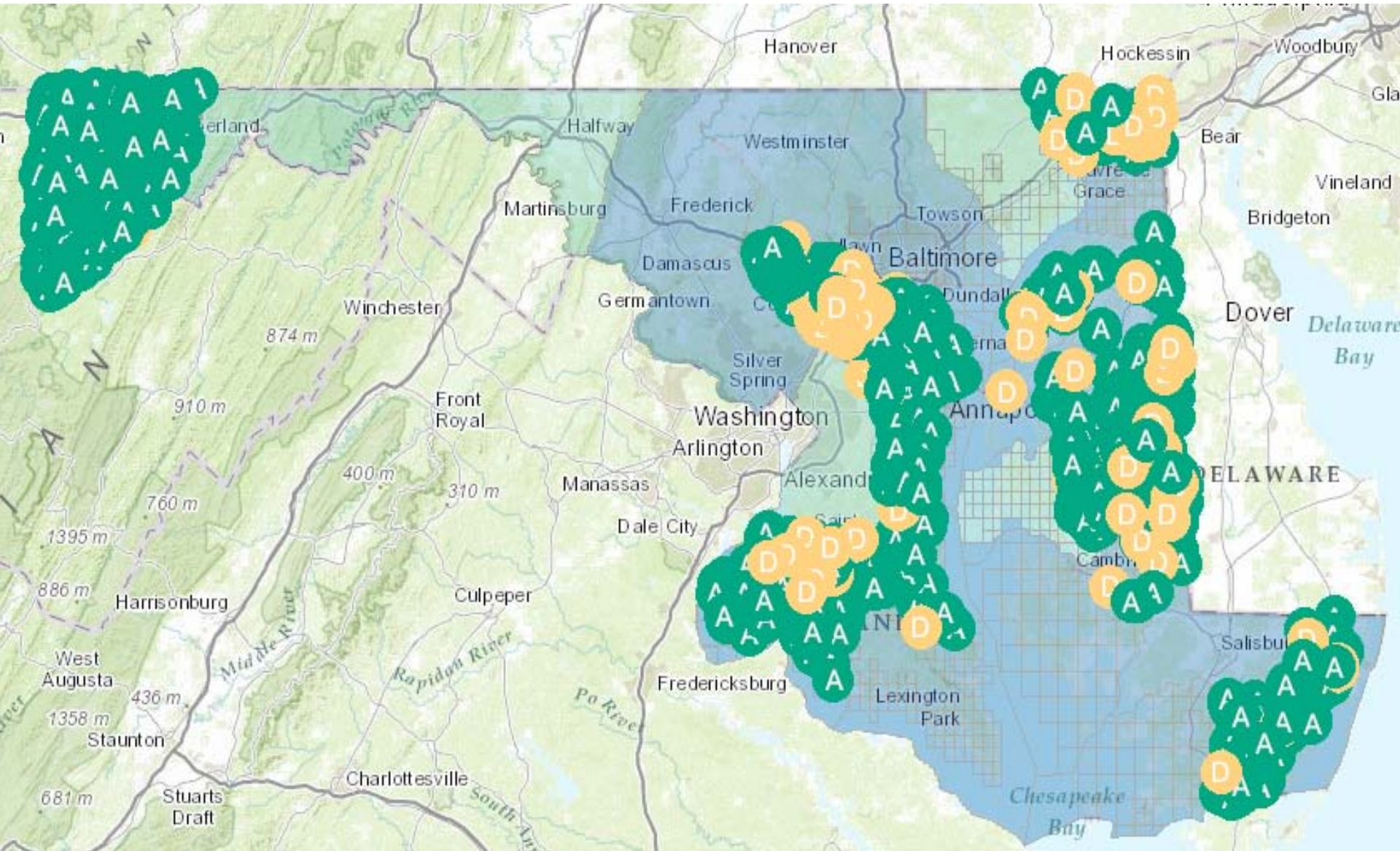
How to use the application:
Find your address:
Enter an address into the "Find a place" box on this page to zoom to the closest match.
- or -
Select the county you are interested in from the "zoom to county" drop down box.



0 20 40km

powered by
Feri, DeLorme, FAO, USGS, MDMap

Data Downloads of Models in 11 Counties (now) + 5 more in Queue + 6 in Production



Note: Downloads includes bridges and culverts, cross-sections, discharge points, HEC-RAS models, shape files, and photos of structures

Access to View Other State Data Sets

The screenshot displays the DFIRM Outreach Flood Risk Application interface. The main map shows Stevensville, Virginia, with various flood risk layers overlaid. The legend on the left is organized into several sections:

- Preliminary Riverine**
 - Preliminary Riverine Panels
 - Preliminary Riverine Floodplain
 - 100 Year Floodplain
 - Floodway
 - 500 Year Floodplain
- Preliminary Coastal**
 - Preliminary Coastal Panels
 - Preliminary Coastal Floodplain
 - 100 Year Floodplain
 - Floodway
 - 500 Year Floodplain
- Effective Floodplain**
 - Effective Panels
 - Effective Floodplain
 - 100 Year Floodplain
 - Floodway
 - 500 Year Floodplain
- Changes Since Last Firm**
- DFirm Data Download**
- LIMWA**
- Basemap**
 - Counties
 - PRELIMINARY

At the bottom of the legend, there is a red circle around the "Add Data" button. The map itself shows various roads (US-301, US-50, etc.), parks (Terrapin Nature Area, Matapeake State Park), and other landmarks. A search bar at the top right contains "QUEEN ANNE'S" and "SELECT THEME". A scale bar at the bottom left indicates 0, 0.3, and 0.6 km. The footer text reads "State of Virginia, Esri, HERE, DeLorme, Intermap, USGS, etc.".

Example: Sea-level Rise

The screenshot displays the DFIRM Outreach Flood Risk Application interface. The title bar reads "MARYLAND DFIRM Outreach Flood Risk Application" and includes navigation links for "MDE", "MDE Firm Outreach", and "Help". The interface features a top navigation bar with "How To", "Details", "FAQs", and "Contents" tabs. A search bar is located in the top right corner, and a "SELECT THEME" dropdown menu is set to "QUEEN ANNE'S".

On the left side, there is a "Legend" panel with "Add Data" and "Contents" sections. The "Add Data" section lists various data layers, with "MD_SeaLevelRiseVulnera" highlighted by a red arrow. Other layers include "Agriculture", "Biota", "Boundaries", "BusinessEconomy", "Demographics", "Elevation", "Environment", "GeocodeServices", "GeoprocessingServices", "Geoscientific", "Health", "Historic", "Hydrology", "Imagery", "Location", "Military", "PlanningCadastre", "PublicSafety", "Society", "Structure", "Transportation", "UtilityTelecom", and "Weather".

The main map area shows a coastal region with roads, water bodies, and land use. A scale bar at the bottom left indicates distances of 0, 0.3, and 0.6 km. The map is overlaid with sea-level rise data, showing areas of vulnerability. A red arrow points to the "MD_SeaLevelRiseVulnera" layer in the legend.

At the bottom right, the map is credited to "State of Virginia, Esri, HERE, DeLorme, Intermap, USGS, etc." and includes the "MDIVAR" logo.

Step 1: Add (+) Data

Step 2: Open Legend

MARYLAND DFIRM Outreach Flood Risk Application MDE | MDE Firm Outreach | Help

How To Details FAQs Contents

Legend

Add Data

- geoata.ma.gov
 - Agriculture
 - Biota
 - Boundaries
 - BusinessEconomy
 - Demographics
 - Elevation
 - Environment
 - GeocodeServices
 - GeoprocessingServices
 - Geoscientific
 - Health
 - Historic
 - Hydrology
 - Imagery
 - Location
 - Military
 - PlanningCadastre
 - PublicSafety
 - Society
 - Structure
 - Transportation
 - UtilityTelecom
 - Weather
 - MD_SeaLevelAffectingMa
 - MD_SeaLevelRiseVulnera
 - MD_SeaLevelRiseWetlanc

Find a place

QUEEN ANNE'S

SELECT THEME

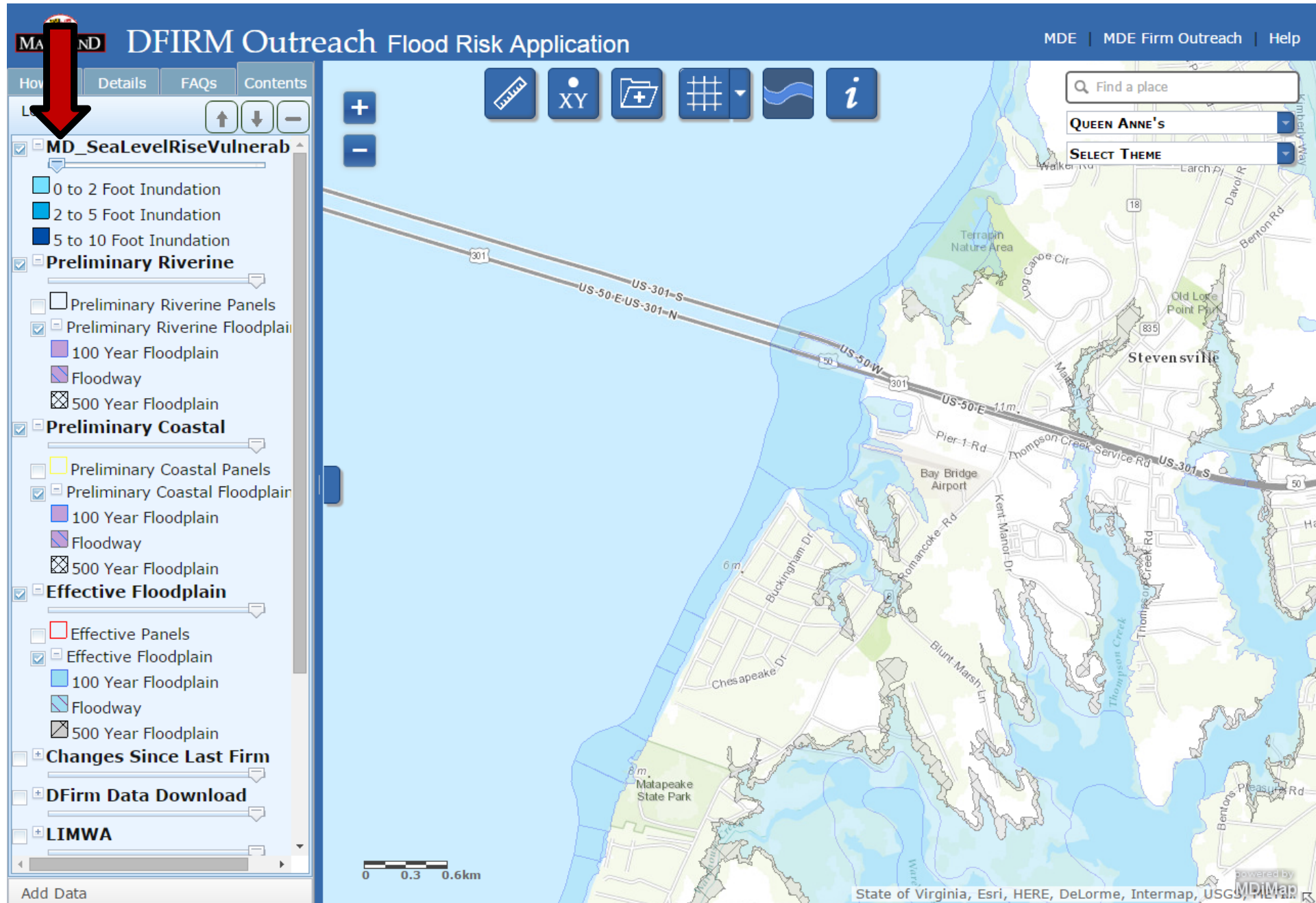
Stevensville

0 0.3 0.6km

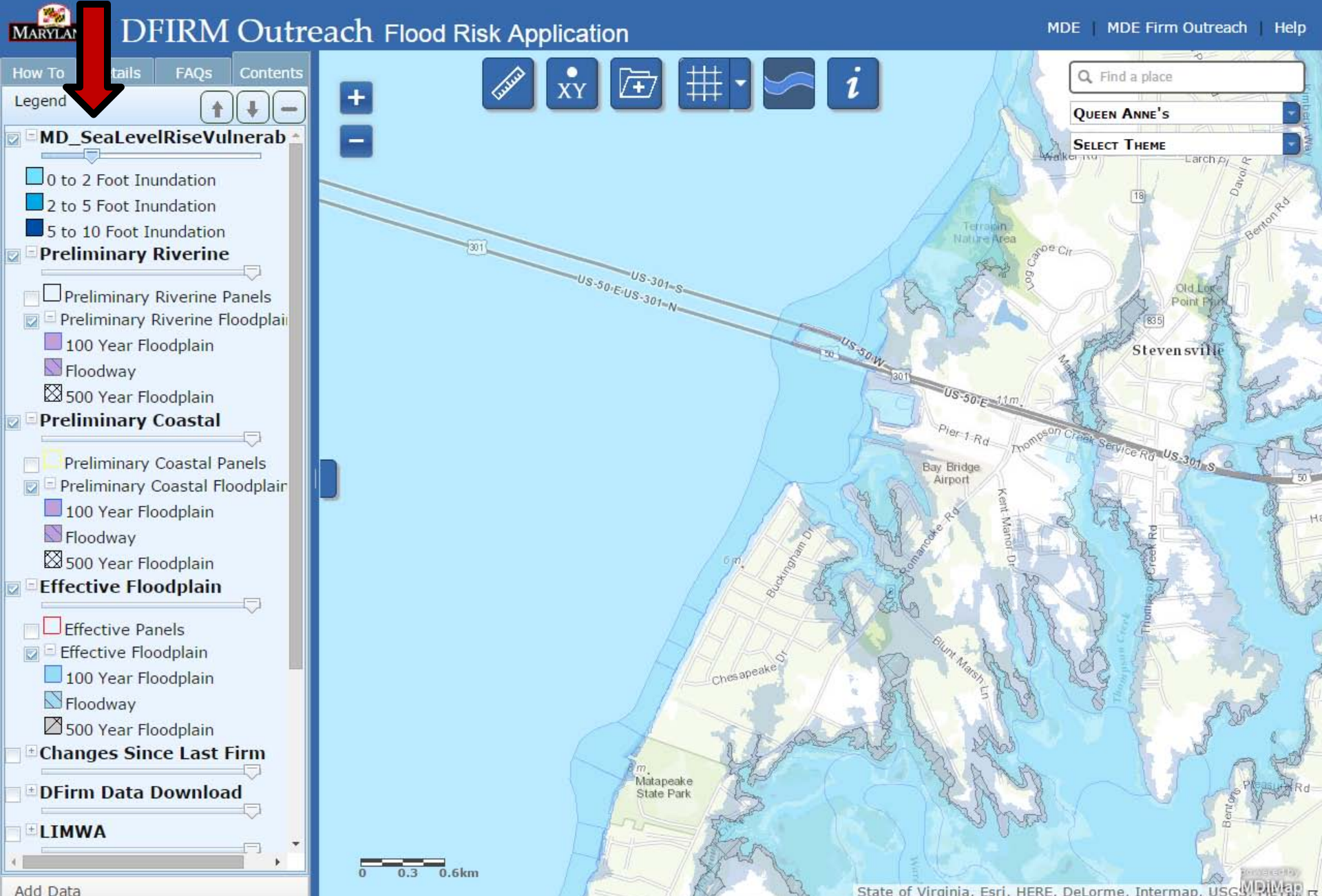
State of Virginia, Esri, HERE, DeLorme, Intermap, USGS, MDI, Mapbox

The purpose of this map service is to show

100-year floodplain with "Zero" Transparency on Sea-level



100-year floodplain with "25 %" Transparency on Sea-level



100-year floodplain with "100%" Transparency on Sea-level

MARYLAND DFIRM Outreach Flood Risk Application

MDE | MDE Firm Outreach | Help

How To | Details | FAQs | Contents

Legend

- MD_SeaLevelRiseVulnerab**
 - 0 to 2 Foot Inundation
 - 2 to 5 Foot Inundation
 - 5 to 10 Foot Inundation
- Preliminary Riverine**
 - Preliminary Riverine Panels
 - Preliminary Riverine Floodplain
 - 100 Year Floodplain
 - Floodway
 - 500 Year Floodplain
- Preliminary Coastal**
 - Preliminary Coastal Panels
 - Preliminary Coastal Floodplain
 - 100 Year Floodplain
 - Floodway
 - 500 Year Floodplain
- Effective Floodplain**
 - Effective Panels
 - Effective Floodplain
 - 100 Year Floodplain
 - Floodway
 - 500 Year Floodplain
- Changes Since Last Firm**
- DFirm Data Download**
- LIMWA**

Find a place

QUEEN ANNE'S

SELECT THEME

0 0.3 0.6km

State of Virginia, Esri, HERE, DeLorme, Intermap, USGS, MPRMap

ADD DATA