



Presentation to:
13th Annual MAFSM
Conference



“Low Hanging Fruit”

Strategies for Identifying and Claiming
NPDES MS4 Impervious Acres
Restoration Credit

By

Chambal Pandey, P.E., GISP, and Charles Walsh

Background

3

- What is NPDES?
- What is Restoration Credit?
- How is credit achieved?

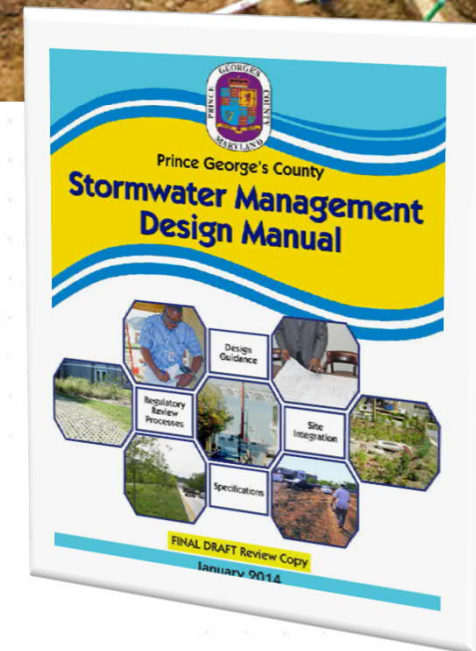
Introduction

- MDE requirements:
 - Develop and implement restoration strategies for controlling pollution in stormwater.
 - Treat polluted stormwater runoff from at least 20% of the total untreated impervious areas.



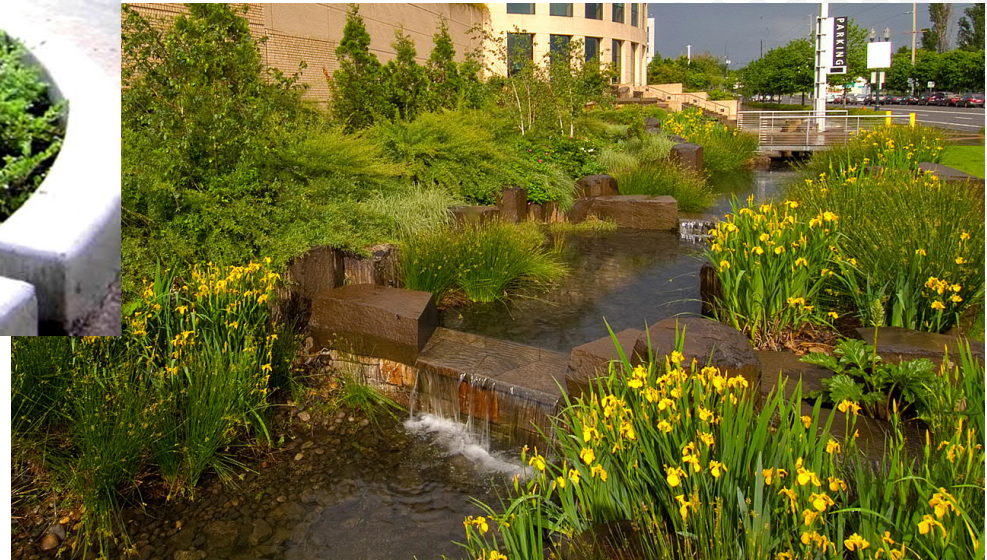
Introduction – Continue

- Traditional strategy:
 - New water quality BMPs, or
 - Retrofitting water quantity BMPs.
- Identifying impervious areas that are already being treated:
 - Existing operational programs; or
 - Ordinances



Source of Credits

- Legislative compliance: Restoration through Redevelopment



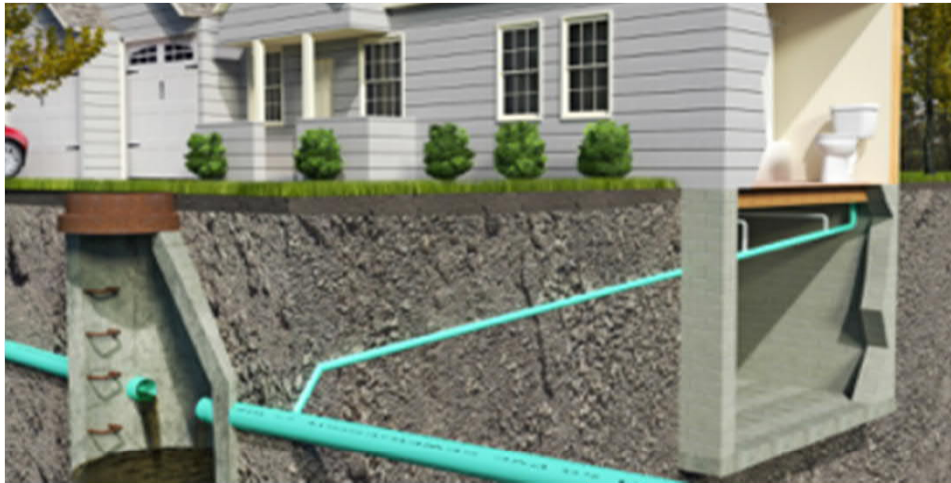
Source of Credits

- Existing operational programs: Inlet Cleaning, Street Sweeping, Street Beautification



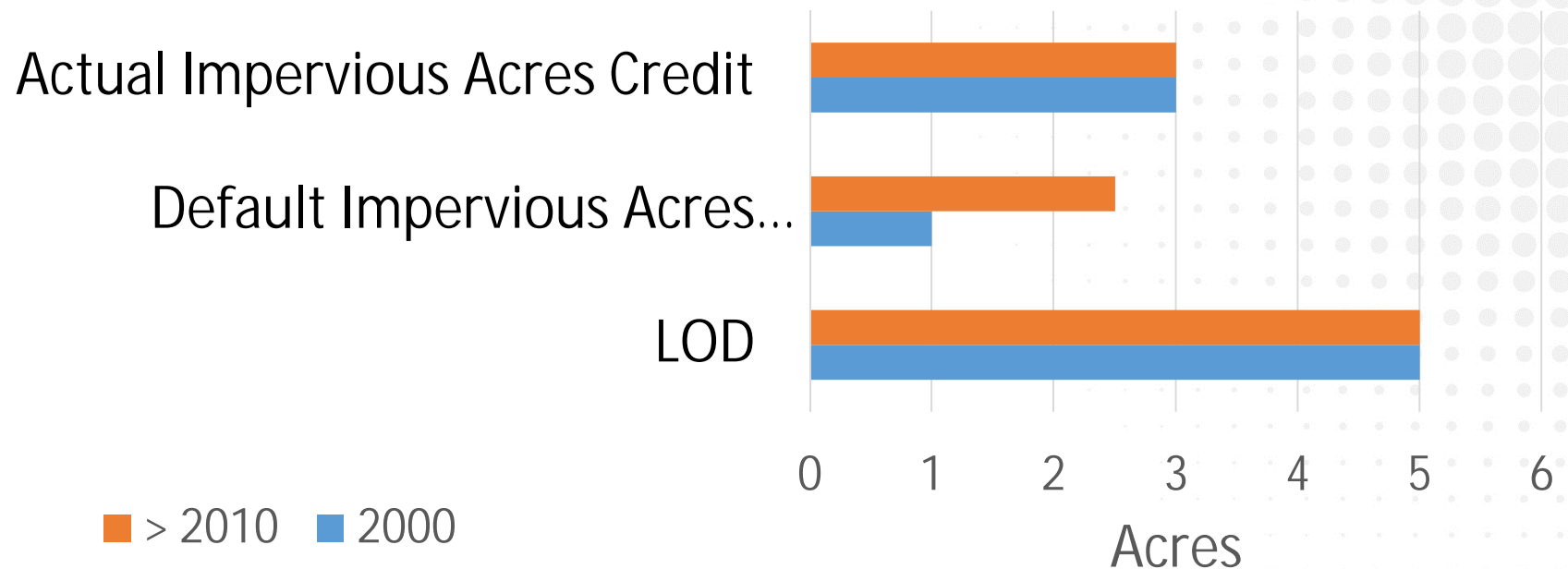
Source of Credits

- Alternative Methods - Removal of Septic Systems, Septic Pumping



Capturing Restoration Credits

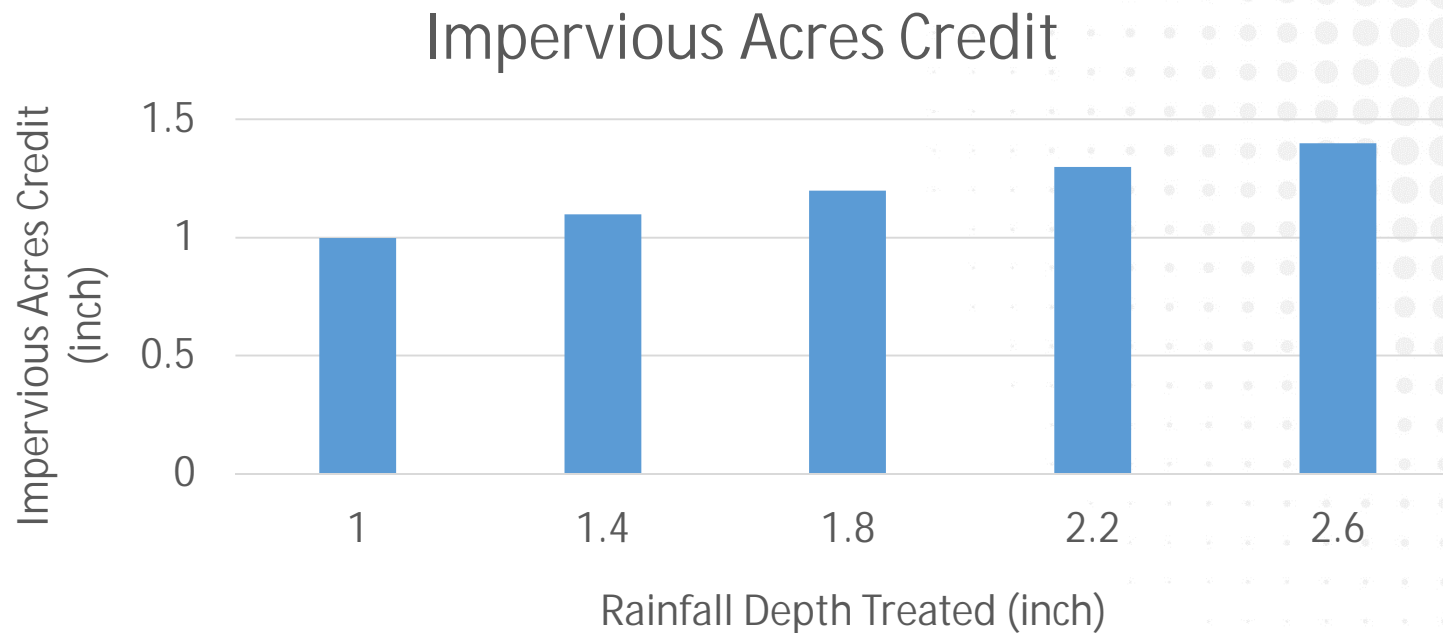
- Redevelopment Activities
 - State regulations required treatment for:
 - In Era 2000: twenty percent of existing impervious areas.
 - In Era > 2010: fifty percent of existing impervious areas.
 - Additional credit may be granted.



Capturing Restoration Credits

10

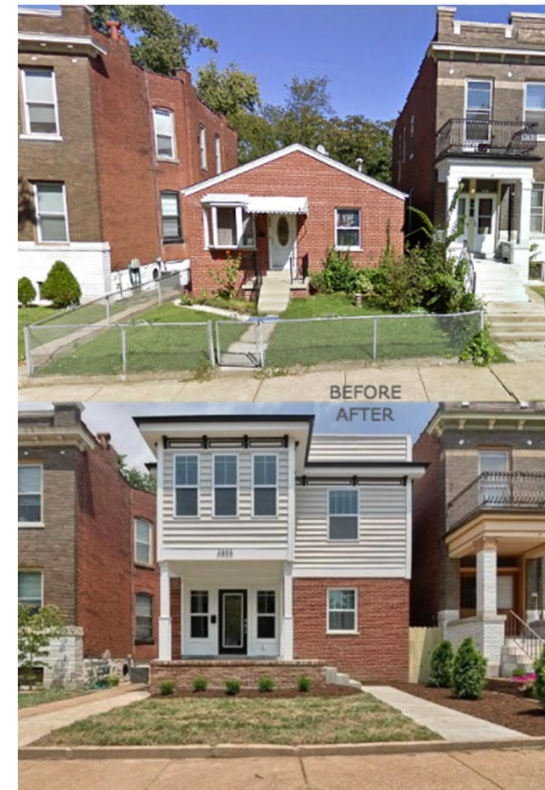
- Redevelopment Activities
 - Installation of New BMPs for the project that meets or exceeds the regulatory requirements for redevelopment
 - Water quality volume treated in excess of 1-inch will receive extra credit



Capturing Restoration Credits – Example

11

- Redevelopment Activities
 - Track existing and new impervious



Capturing Restoration Credits

12

- Existing operational programs: Inlet Cleaning, Street Sweeping, and Channel (concrete or earthen) Cleaning
 - One impervious acres credit for every 2.5 tons of pollutant removed
 - Records of the dump tickets and schedule of the routes could be used to obtain the data
 - Total tons removed can be aggregated based on the Census Tract

Capturing Restoration Credits

13

- Existing operational programs: street beautification
 - One acre impervious credit can be claimed by planting 263 trees.



Capturing Restoration Credits

14

- Alternative Practices: Septic Pumping, Septic Denitrification, and Septic Connections to Sewer.
 - MDE provides:
 - 0.03 impervious acres credits for one septic pumping
 - 0.26 impervious acres credits for installation of septic denitrification system, and
 - 0.39 impervious acres credits for septic connection to sewer

Capturing Restoration Credits Example

15

Table of Contents

- Layers
 - SewerLines
 - Alternate BMP Point
 - PropertyParcels
 - AerialImagery
 - Boundary
 - Footprint

Table

Alternate BMP Point

	CITY	ZIPCODE	STATE	TN_REDUCTION	EQU_IMP_ACR	INSTALL_DATE	IMPL_COST	PROJECTED_IMPL
	HYATTSVILLE			<Null>	0.4	12/18/2013	0	
▶	LANDOVER			<Null>	0.4	11/27/2012	0	
	BERWYN HEIGHTS			<Null>	0.4	7/26/2013	0	
	OXON HILL			<Null>	0.4	12/6/2013	0	

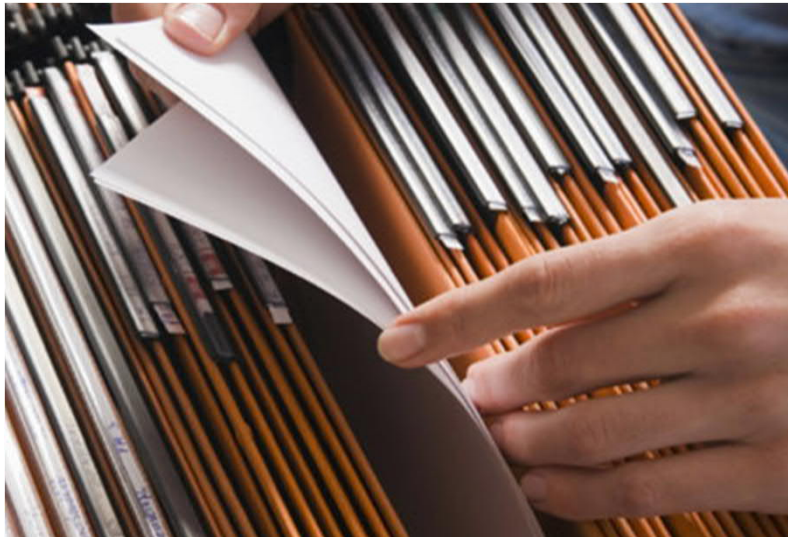
PropertyParcels SewerLines Alternate BMP Point

1340405.184 461282.586 Feet

Capturing Restoration Credits – Example

16

- Existing operational programs:
 - Data Mining
 - Records Searching



Recap

17

- Impervious Acres Credit can be claimed from the existing programs or operation.
- May provide financial relief, and
- Reduce the gap between treated acres and the targeted treatment acres.



PRIME AE