

Infinite Stormwater

Leadership into the Future

Brian E. Wagner, P.E.

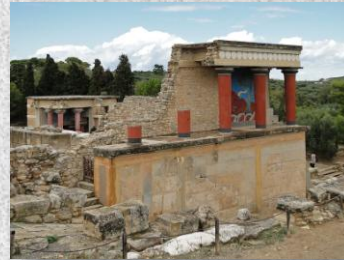
June 18, 2020

Infinite Stormwater, Leadership into the Future

Knossos

Crete, Greece

- First settled 7000 B.C.
- Called Europe's oldest city
- Peak population of 100,000 in 1700 B.C.
- Tapered clay pipes used for Water Supply



By Bernard Gagnon - Own work. CCBY-SA 3.0
<https://commons.wikimedia.org/w/index.php?curid=219116502>



By Eric Gaba (Sting) - Own work, based on Image:Crete_topographic_map-fr.svg (modified and translated) created by myself ; Compass rose : Image:Brújula.svg (modified) created by Sergio under GFDL, CC BY-SA 4.0, <https://commons.wikimedia.org/w/index.php?curid=3180935>

June 18, 2020

Infinite Stormwater, Leadership into the Future

A CONSTANT CYCLE OF REPAIR AND RECLAMATION



15 years vacant

June 18, 2020

Infinite Stormwater, Leadership into the Future

A never ending – immeasurable – limitless problem.



Today there is an estimated average 370 billion cubic feet of surface runoff from Maryland every year –

3 times more than 300 years ago.



June 18, 2020

Infinite Stormwater, Leadership into the Future

A Finite Game 

- The Players are known
- The Rules are agreed to
- There is a beginning, middle, and end
- There is a Winner and a Loser

An Infinite Game 

- The Players are NOT known
- The Rules are CAN change
- There is no foreseeable END
- There are no Winners

What is the Goal?

WIN the Game **PERPETUATE the Game**

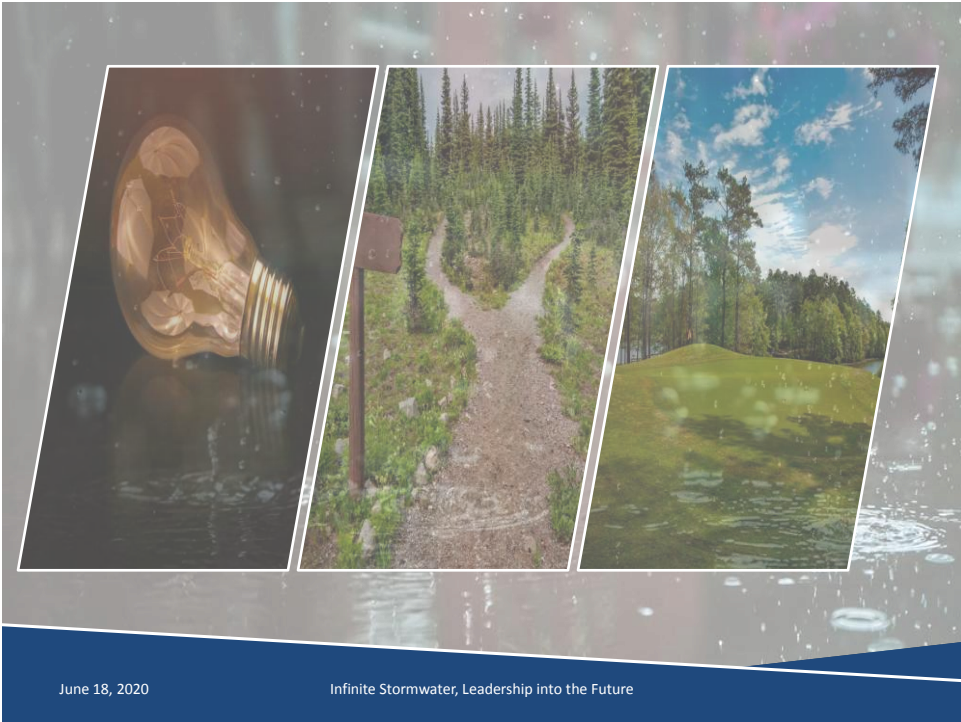
June 18, 2020 Infinite Stormwater, Leadership into the Future

Yellowstone National Park

- 3,472 square miles (2,221,766 acres)
- More than 10,000 hydrothermal features
- More than 500 active geysers
- 1,000 miles of hiking trails
- 285 species of birds



June 18, 2020 Infinite Stormwater, Leadership into the Future



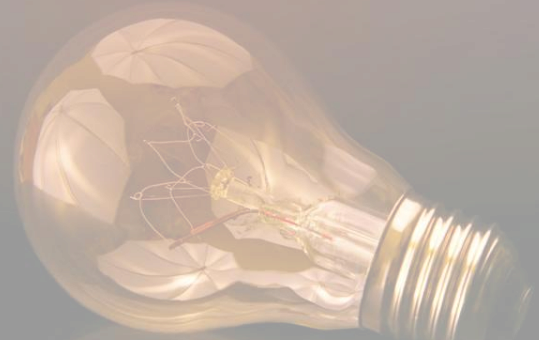
June 18, 2020

Infinite Stormwater, Leadership into the Future



June 18, 2020

Infinite Stormwater, Leadership into the Future



“There’s a way to do it better – find it.”

– Thomas Edison

June 18, 2020

Infinite Stormwater, Leadership into the Future

Cascade Lake
Carroll County, MD

- Drainage Area: 2.5 sq. miles
- Constructed: 1900
- Renovated/Modified: 1976
- Classification: Significant
- Permanent Pool Volume: 32 ac.-ft. ±
- Emergency Spillway Crest Volume: 36 ac.-ft. ±
- Dam Crest Volume: 46 ac.-ft. ±



June 18, 2020

Infinite Stormwater, Leadership into the Future

Cascade Lake Carroll County, MD

Day 1

Day 3

Day 8

June 18, 2020

Infinite Stormwater, Leadership into the Future

Innovation

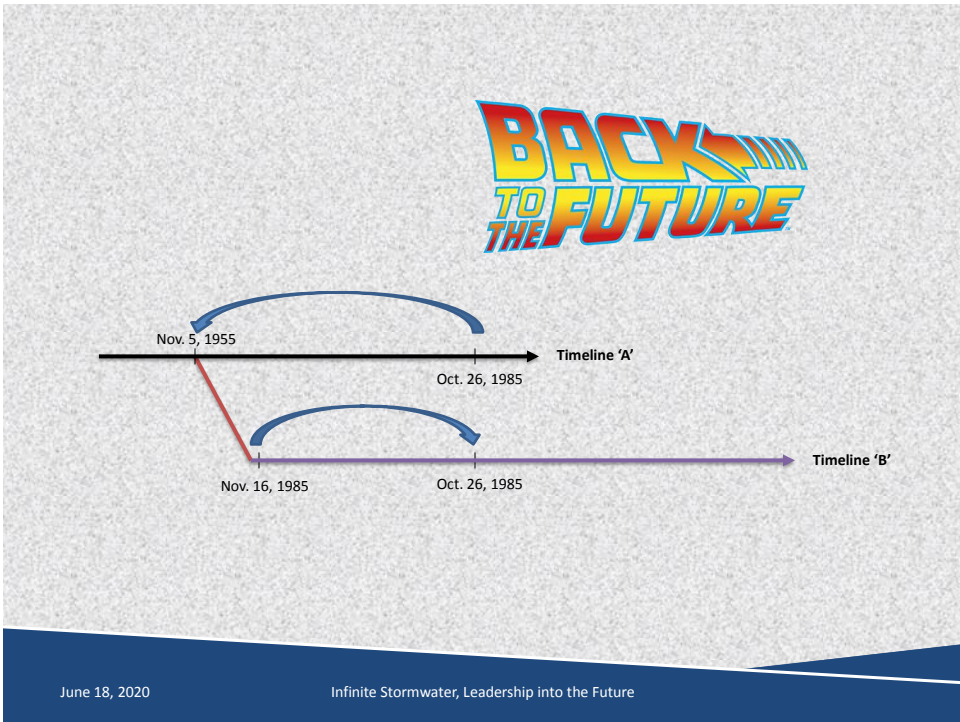
- Embrace the Evolution of Change
- Adapt to New Scenarios
- Think “Outside the Box”
- Be Creative
- Ask Questions

“Innovation distinguishes between a leader and a follower.”

– Steve Jobs

June 18, 2020

Infinite Stormwater, Leadership into the Future





Influence

- Leadership is simply Exerting Influence
- Positive is Contagious
- Small Changes can make Big Differences
- Long-term Commitment

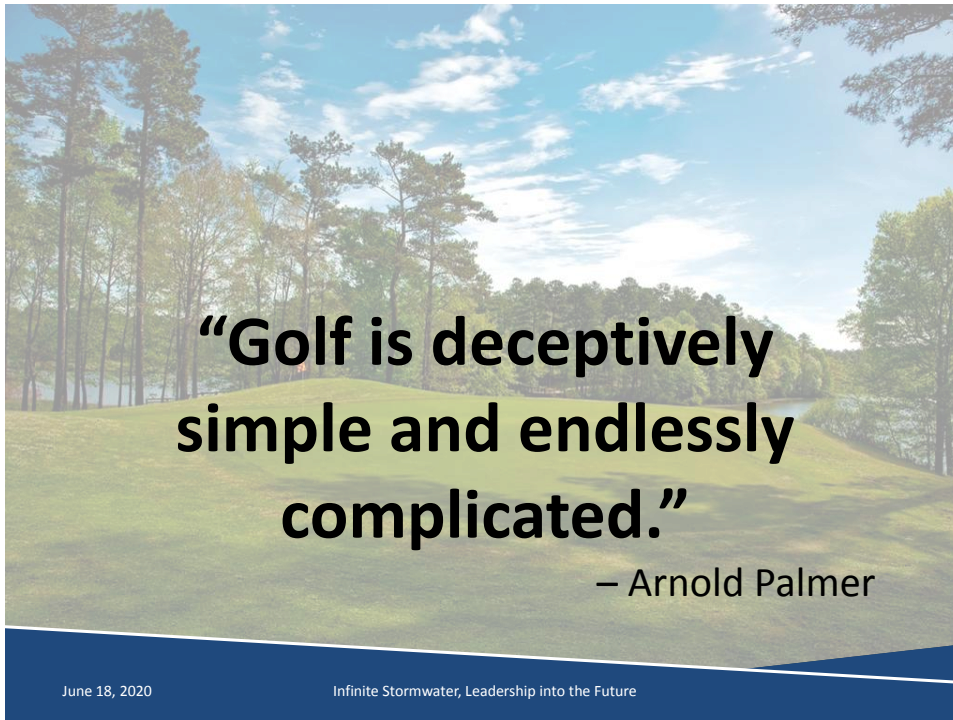
**“People don’t buy what you do,
they buy why you do it.”**
– Simon Sinek

June 18, 2020 Infinite Stormwater, Leadership into the Future



Performance

June 18, 2020 Infinite Stormwater, Leadership into the Future



“Golf is deceptively simple and endlessly complicated.”

– Arnold Palmer

June 18, 2020 Infinite Stormwater, Leadership into the Future



Performance

- Knowledge is Valuable
- Confidence Grows
- Leaves a Lasting Impression
- Is not limited to a “stage” but all types of media both verbal and non-verbal)

“Be so good they can’t ignore you.”

– Steve Martin

June 18, 2020 Infinite Stormwater, Leadership into the Future



Creative Innovation

Persistent Influence

Outstanding Performance

June 18, 2020

Infinite Stormwater, Leadership into the Future

**“Stormwater Management
is deceptively simple
yet
endlessly complicated.”**

Brian Wagner

www.infinitestormwater.com

June 18, 2020

Infinite Stormwater, Leadership into the Future